

FB7



# fredbennett®

men's jewellery collection 2012-2013

Valid until Autumn 2013



# stainless steel utility

A trendy range of designs including chunky leather pieces with injections of colour, tribal influences and exciting textures.



**N3385**  
60.5cm/23¾"

STAINLESS  
STEEL



**B4108**  
21.5cm/8½"

BLACK PVD

STAINLESS  
STEEL



**B4208**  
19-23cm/7½-9"

LEATHER

STAINLESS  
STEEL



**B3672**  
22cm/8¾"

LEATHER



**N3452**  
51cm/20"

**B4211**  
23cm/9"

LEATHER

STAINLESS  
STEEL

STAINLESS  
STEEL



**P3632**  
45cm/17¾"  
silicon necklace

BLACK PVD

STAINLESS  
STEEL



**B4212**  
22cm/8¾"

OXIDISED

STAINLESS  
STEEL



**B3897**  
23cm/9"

LEATHER AND OXIDISED

STAINLESS  
STEEL



**P3633**  
45cm/17¾"  
silicon necklace

**fredbennett®**  
logo on back



**Y2597**

**fredbennett®**  
logo on back

BLACK PVD

STAINLESS  
STEEL

**V429**



**R3124**  
sizes 58, 60,  
62, 65, 67

BLACK PVD

STAINLESS  
STEEL



**B3895**  
21cm/8¼"

LEATHER

STAINLESS  
STEEL



**B3898**  
21cm/8¼"

**N3225**  
50cm/19½"

LEATHER AND BLACK PVD

STAINLESS  
STEEL



**N3449**  
50cm/19½"

STAINLESS  
STEEL



**V428**

GUNMETAL PVD

STAINLESS  
STEEL



**B4205**  
23cm/9"

ANTIQUE GREY PVD



**B4206**  
21cm/8¼"

ANTIQUE GREY PVD

STAINLESS  
STEEL



**N3384**  
48-50cm/19-19½"

**B4107**  
20-22cm/8-8¾"

LEATHER

STAINLESS  
STEEL



**P2576**  
45cm/17¾"  
silicon necklace



BRUSHED

STAINLESS  
STEEL



**P3184**  
51cm/20"



STAINLESS  
STEEL



**N3451**  
51cm/20"

**B4209**  
21cm/8¼"

LEATHER

STAINLESS  
STEEL



**P3182**  
51cm/20"



STAINLESS  
STEEL



**B3673**  
21cm/8¼"

LEATHER

STAINLESS  
STEEL



**N3221**  
50cm/19½"

**B3892**  
23cm/9"

LEATHER AND BRUSHED FINISH

STAINLESS  
STEEL



**B3894**  
22cm/8¾"

LEATHER AND BLACK PVD



**NEW!**  
necklace and  
bracelet pouch

STAINLESS  
STEEL



**B4106**  
21.5cm/8½"

**N3383**  
50cm/19½"

LEATHER

STAINLESS  
STEEL



**N3222**  
50cm/19½"



**B3893**  
21.5cm/8½"

LEATHER AND BLACK PVD

STAINLESS  
STEEL



**B4207**  
22cm/8¾"  
magnetic catch

LEATHER



**N3453**  
50cm/19½"



**B4210**  
21.5cm/8½"

STAINLESS  
STEEL

LEATHER, GOLD, BROWN AND ROSE PVD

STAINLESS  
STEEL

**B4213**  
21.5cm/8½"



**B4214**  
21.5cm/8½"

**B4215**  
21.5cm/8½"

LEATHER



STAINLESS  
STEEL



**B3671**  
21.5cm/8½"

LEATHER

# stainless steel classic

A range of sophisticated designs, offering a core selection of dog tags, crosses and chains.



**N3380**  
45cm/17¾"  
leather necklace

**R3126**  
58, 60, 62,  
65, 67

**B4102**  
21.5cm/8½"

CRYSTAL

STAINLESS  
STEEL

STAINLESS  
STEEL



**B3884®**  
21cm/8¼"  
magnetic catch

LEATHER AND CRYSTAL

STAINLESS  
STEEL



**V414®**

CRYSTAL



**E3795**

CUBIC ZIRCONIA

STAINLESS  
STEEL



**P3006<sup>®</sup>**  
50cm/19½"

BLACK PVD

STAINLESS  
STEEL



**B3393<sup>®</sup>**  
black PVD

**V381**  
rubber

STAINLESS  
STEEL



**P2768<sup>®</sup>**  
45cm/17¾"  
silicon necklace



**V365<sup>®</sup>**

RESIN



STAINLESS  
STEEL



**B3122<sup>®</sup>**  
adjustable

LEATHER AND RESIN

STAINLESS  
STEEL



**P3372**  
45cm/17¾"  
silicon necklace

BRUSHED AND POLISHED

STAINLESS  
STEEL



**P3181**  
45cm/17¾"  
silicon necklace

BLACK PVD

STAINLESS  
STEEL



**P2563**  
50cm/19½"

**V380**

STAINLESS  
STEEL



**V424**

ENAMEL AND BRUSHED

STAINLESS  
STEEL



**R2793**  
sizes 58, 60,  
62, 65, 67

TEXTURED WITH BLACK PVD



**V421**

CARBON FIBRE

STAINLESS  
STEEL



**R2727**  
sizes 58, 60,  
62, 65, 67

**R2729**  
sizes 58, 60,  
62, 65, 67

BLACK PVD

STAINLESS  
STEEL



**P3367**  
51cm/20"  
brushed and polished



**R3042**  
sizes 58, 60,  
62, 65, 67



**V415**

STAINLESS  
STEEL



**P3731**  
51cm/20"



**V453**



STAINLESS  
STEEL



**P3180**  
51cm/20"  
brushed

**CUBIC ZIRCONIA**

STAINLESS  
STEEL



**N3122**  
55cm/21¾"

STAINLESS  
STEEL



**N3224**  
56cm/22"

STAINLESS  
STEEL

STAINLESS  
STEEL



**B3896**  
22cm/8¾"

STAINLESS  
STEEL



**B3400**  
23.5cm/9¼"

STAINLESS  
STEEL



**B2906**  
23cm/9"

STAINLESS  
STEEL



**N2874**  
55cm/21¾"

STAINLESS  
STEEL



**N2686**<sup>®</sup>  
56cm/22"



**N2488**  
55cm/21¾"

STAINLESS  
STEEL

STAINLESS  
STEEL



**P3002**  
45cm/17¾"  
silicon necklace

STAINLESS  
STEEL



**P2542**  
50cm/19½"

**BRUSHED AND POLISHED**

STAINLESS  
STEEL



**P3370**  
51cm/20"



**E2938**



**V319**

**BRUSHED AND POLISHED**



STAINLESS  
STEEL



**R2791**  
sizes 58, 60,  
62, 65, 67  
brushed and  
polished

**DIAMOND**



**R2511**  
sizes 58, 60,  
62, 65, 67  
spinning ring



**R2510**  
sizes 58, 60,  
62, 65, 67

**BRUSHED AND POLISHED**



STAINLESS  
STEEL



V430



V423

CUBIC ZIRCONIA

STAINLESS  
STEEL



R3125  
sizes 58, 60,  
62, 65, 67

V431

CUBIC ZIRCONIA

STAINLESS  
STEEL



V422



R3127  
sizes 58, 60,  
62, 65, 67

MOTHER OF PEARL

STAINLESS  
STEEL



P3005  
50cm/19½"

CUBIC ZIRCONIA AND COFFEE PVD

STAINLESS  
STEEL



B3899  
22cm/8¾"



# sterling silver active

A stimulating collection of designs including the new 'Screw collection' with oxidised finish and exciting leather & wood combinations.



925  
SILVER



**N3388**<sup>®</sup>  
51cm/20"  
leather necklace

WOOD

925  
SILVER



**R3128**<sup>®</sup>  
sizes 60, 62,  
64, 67, 70



**V439**<sup>®</sup>

WOOD

925  
SILVER



**B4112**<sup>®</sup>  
22cm/8¾"  
leather bracelet

WOOD

925  
SILVER



**B3901**®  
21cm/8¼"

LEATHER



**N3226**®  
51cm/20"

925  
SILVER

LEATHER



**N3454**®  
51cm/20"

WOOD



**B4216**®  
adjustable

WOOD AND LEATHER

925  
SILVER

925  
SILVER



**B3901**®  
21cm/8¼"

LEATHER



**N3226**®  
51cm/20"

925  
SILVER

LEATHER



**N3454**®  
51cm/20"

WOOD



**B4216**®  
adjustable

WOOD AND LEATHER

925  
SILVER



**NEW!**  
necklace and  
bracelet pouch

925  
SILVER



V345<sup>®</sup>

WOOD

925  
SILVER



P3733<sup>®</sup>  
51cm/20"



V457<sup>®</sup>

WOOD



N924<sup>®</sup>  
46cm/18"

925  
SILVER

WOOD

B2406<sup>®</sup>  
21cm/8 1/4"



925  
SILVER

**B4217®**  
22cm/8¾"  
magnetic catch

LEATHER AND OXIDISED



925  
SILVER

**N3230**  
48cm/19"  
leather necklace

RESIN



925  
SILVER

**P3732®**  
51cm/20"  
leather necklace



**V456®**

OXIDISED



925  
SILVER

**R2519**  
sizes 60, 62,  
64, 67, 70

OXIDISED



**R2943®**  
sizes 60, 62,  
64, 67, 70

ENAMEL



925  
SILVER

**B4113®**  
22cm/8¾"  
magnetic catch  
leather bracelet

**R3129®**  
sizes 60, 62,  
64, 67, 70



OXIDISED

925  
SILVER



**R3044<sup>®</sup>**  
sizes 60, 62,  
64, 67, 70

OXIDISED

925  
SILVER



**B3404<sup>®</sup>**  
24cm/9½"

LEATHER AND OXIDISED

925  
SILVER



**N3219<sup>®</sup>**  
50cm/19½"  
leather necklace



**B3886<sup>®</sup>**  
22cm/8¾"  
leather bracelet

WOOD AND OXIDISED



925  
SILVER



**N926B<sup>®</sup>**  
adjustable  
leather necklace

ONYX, WOOD AND OXIDISED

# sterling silver utility

Stylish urban designs introducing new agate bead bracelets with pavé detail, a dynamic mix of lava beads and tiger's eye designs.



**B4103**  
adjustable

925  
SILVER

BLACK AGATE AND CUBIC ZIRCONIA



925  
SILVER

**B4104**  
adjustable

HEMATITE AND CUBIC ZIRCONIA

925  
SILVER

**N2493**  
50cm/19½"  
magnetic catch



**B2915**  
21cm/8¼"  
magnetic catch

LEATHER AND OXIDISED



925  
SILVER



**B3402<sup>®</sup>**  
22cm/8¾"

**N2878<sup>®</sup>**  
46cm/18"

CUBIC ZIRCONIA AND LEATHER

925  
SILVER



**P2566B<sup>®</sup>**  
51cm/20"  
cord necklace

CUBIC ZIRCONIA



**P3191<sup>®</sup>**  
51cm/20"

925  
SILVER



**R3176<sup>®</sup>**  
sizes 60, 62,  
64, 67, 70



**V454<sup>®</sup>**

925  
SILVER



**V404<sup>®</sup>**



**R2870<sup>®</sup>**  
sizes 60, 62,  
64, 67, 70

CUBIC ZIRCONIA AND OXIDISED

925  
SILVER

**N2491B®**  
46cm/18"



**B2910B®**  
22cm/8¾"

ONYX

925  
SILVER



**V327B**

BLACK AGATE

925  
SILVER



**B752B®**



**R955B®**  
sizes 58, 60, 62,  
64, 67, 70

RESIN

925  
SILVER



**B2913®**  
21cm/8¼"

LEATHER

925  
SILVER

**P3192®**  
51cm/20"  
cord necklace



**R2875®**  
sizes 60, 62,  
64, 67, 70



ENAMEL

925  
SILVER



**B4109<sup>®</sup>**  
22cm/8¾"

LABRADORITE AND LEATHER

925  
SILVER



**P3369<sup>®</sup>**  
51cm/20"  
cord necklace

925  
SILVER



**N2182<sup>®</sup>**  
51cm/20"



**B2648<sup>®</sup>**  
22cm/8¾"

OXIDISED



925  
SILVER

**N3220**<sup>®</sup>  
adjustable  
cord necklace



ONYX AND OXIDISED

925  
SILVER



**B3887**<sup>®</sup>  
21cm/8¼"  
magnetic catch

ONYX AND OXIDISED



**B3888**<sup>®</sup>  
22cm/8¾"

925  
SILVER

LAVA BEAD

925  
SILVER



**N674**<sup>®</sup>  
51cm/20"



**N3227<sup>®</sup>**  
53cm/21"

**B3902<sup>®</sup>**  
23cm/9"

925  
SILVER

LEATHER



**N3229**  
45cm/17¾"



**B3904**  
21cm/8¼"

925  
SILVER

LEATHER AND RESIN

925  
SILVER



**B2840<sup>®</sup>**

OXIDISED



925  
SILVER



**B3756**<sup>®</sup>  
22cm/8 3/4"

**N3123**<sup>®</sup>  
46cm/18"

**TIGER'S EYE AND LEATHER**

925  
SILVER



**R2876**<sup>®</sup>  
sizes 60, 62,  
64, 67, 70

**OXIDISED**



**N3048**<sup>®</sup>  
46cm/18"

**LEATHER AND OXIDISED**

925  
SILVER



**NEW!**  
necklace and  
bracelet pouch

925  
SILVER



**P3634**<sup>®</sup>  
51cm/20"

**TIGER'S EYE**



**N3386<sup>®</sup>**  
56cm/22"  
leather necklace



**V438<sup>®</sup>**

**TIGER'S EYE**

925  
SILVER

925  
SILVER



**B4110<sup>®</sup>**  
stretch

**TIGER'S EYE**

925  
SILVER



**N2489<sup>®</sup>**  
46cm/18"

**TIGER'S EYE**

925  
SILVER



**B4105<sup>®</sup>**  
adjustable

**TIGER'S EYE AND CORD**

925  
SILVER



**B3905<sup>®</sup>**  
adjustable

**TIGER'S EYE AND LEATHER**

# sterling silver classic

Traditional designs including core best selling crosses in a selection of mixed finishes with classic bangles and cufflinks.



925  
SILVER



**P2569**<sup>®</sup>  
51cm/20"



**V334**<sup>®</sup>

**R2515**<sup>®</sup>  
sizes 60, 62,  
64, 67, 70

925  
SILVER



**P1212**<sup>®</sup>  
51cm/20"

925  
SILVER



**B3890**<sup>®</sup>



925  
SILVER



**P2010<sup>®</sup>**  
51cm/20"  
features  
princess cut  
diamond

**P2008<sup>®</sup>**  
51cm/20"  
features two princess  
cut diamonds

DIAMOND

925  
SILVER



**V210L<sup>®</sup>**

BLUE SAPPHIRE



925  
SILVER



**V222<sup>®</sup>**  
features ten diamonds



**V208<sup>®</sup>**  
features two princess  
cut diamonds

DIAMOND

925  
SILVER



**B2572<sup>®</sup>**  
features two diamonds



**R2413<sup>®</sup>**  
sizes 60, 62, 64, 67, 70  
features two diamonds

DIAMOND AND OXIDISED

925  
SILVER



P794®  
51cm/20"

SCRATCHED FINISH

925  
SILVER



R3045®  
sizes 60, 62,  
64, 67, 70

925  
SILVER



B750®



V188®

SCRATCHED FINISH

925  
SILVER



R2621®  
sizes 60, 62,  
64, 67, 70



V374®

SCRATCHED AND POLISHED



925  
SILVER



P2776®  
51cm/20"

925  
SILVER



V348

925  
SILVER



E2657C

CRYSTAL

925  
SILVER



V352

925  
SILVER



E2172C<sup>®</sup>



R2141C<sup>®</sup>  
sizes 60, 62, 64, 67

CUBIC ZIRCONIA

925  
SILVER



Y018



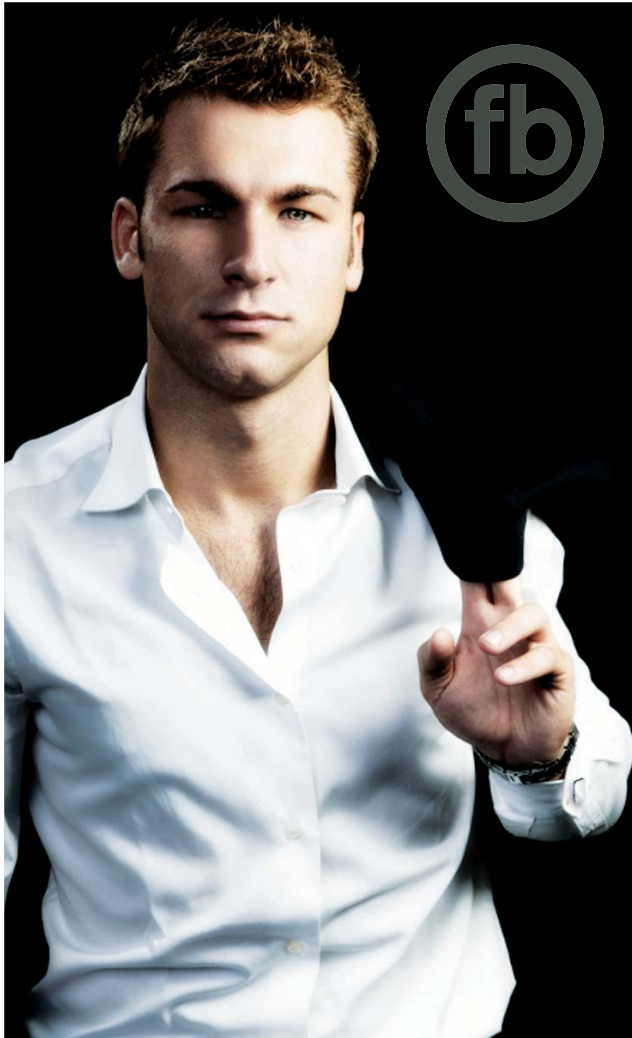
V343B

CARBON FIBRE



# silver plated

An affordable on trend silver plated collection.



SILVER  
PLATED



**N3382**<sup>®</sup>  
46cm/18"  
leather necklace

MADE WITH SWAROVSKI<sup>®</sup> ELEMENTS

SILVER  
PLATED



**N3387**<sup>®</sup>  
53cm/21"  
leather necklace

SILVER  
PLATED



**N3450**<sup>®</sup>  
51cm/20"  
leather necklace



**V455**<sup>®</sup>

MADE WITH SWAROVSKI<sup>®</sup> ELEMENTS



**B4111**<sup>®</sup>  
23cm/9"  
leather

MADE WITH SWAROVSKI<sup>®</sup> ELEMENTS

# silver plated cufflinks

fredbennett<sup>®</sup>fb

SILVER  
PLATED



V437<sup>®</sup>

MADE WITH SWAROVSKI<sup>®</sup> ELEMENTS

SILVER  
PLATED



V435<sup>®</sup>  
enamel

MADE WITH SWAROVSKI<sup>®</sup> ELEMENTS

SILVER  
PLATED



V450<sup>®</sup>

MADE WITH SWAROVSKI<sup>®</sup> ELEMENTS

SILVER  
PLATED



V433<sup>®</sup>  
imitation turquoise

MADE WITH SWAROVSKI<sup>®</sup> ELEMENTS

SILVER  
PLATED



V420<sup>®</sup>

MADE WITH SWAROVSKI<sup>®</sup> ELEMENTS

SILVER  
PLATED



V419<sup>®</sup>

MADE WITH SWAROVSKI<sup>®</sup> ELEMENTS



V416<sup>®</sup>

# stainless steel cufflinks



STAINLESS  
STEEL



**V423**  
cubic zirconia



**V430**

STAINLESS  
STEEL



**V415**

STAINLESS  
STEEL



**V380**



**V381**  
rubber

STAINLESS  
STEEL



**V453**



**V422**  
mother of pearl

STAINLESS  
STEEL



**V319**  
brushed and  
polished



**V431**  
cubic zirconia

STAINLESS  
STEEL



**V421**  
carbon fibre



**V414**<sup>®</sup>  
crystal

STAINLESS  
STEEL



**V365**<sup>®</sup>  
resin



**V429**  
black PVD

STAINLESS  
STEEL



**V424**  
brushed and  
black enamel



**V428**  
gunmetal PVD

# sterling silver cufflinks

925 SILVER



V454<sup>®</sup>



V188<sup>®</sup>  
scratched  
finish

925 SILVER



V432<sup>®</sup>  
ruthenium and  
oxidised



V456<sup>®</sup>  
oxidised

925 SILVER



V438<sup>®</sup>  
tiger's eye



V439<sup>®</sup>  
wood

925 SILVER



V374<sup>®</sup>  
scratched and  
polished



V334<sup>®</sup>

925 SILVER



V343B  
carbon fibre



V327B  
black agate

925 SILVER



V457<sup>®</sup>



V345<sup>®</sup>

WOOD

925 SILVER



V208<sup>®</sup>  
features two princess  
cut diamonds



V222<sup>®</sup>  
features ten diamonds

DIAMOND

925 SILVER



V404<sup>®</sup>  
cubic zirconia  
and oxidised



V210L<sup>®</sup>  
features two blue  
sapphires

925 SILVER



V348



V352

# stainless steel rings

All the rings from the entire collection and a selection of classic rings and new on trend designs.



STAINLESS STEEL



**R3042**  
sizes 58, 60,  
62, 65, 67



**R3127**  
sizes 58, 60,  
62, 65, 67  
mother of pearl

STAINLESS STEEL



**R3125**  
sizes 58, 60,  
62, 65, 67  
cubic zirconia



**R3124**  
sizes 58, 60,  
62, 65, 67  
black PVD



**R3126**  
sizes 58, 60,  
62, 65, 67  
crystal

STAINLESS STEEL



**R2791**  
sizes 58, 60,  
62, 65, 67  
diamond



**R2511**  
sizes 58, 60,  
62, 65, 67  
spinning ring



**R2510**  
sizes 58, 60,  
62, 65, 67

BRUSHED AND POLISHED

STAINLESS STEEL



**R2727**  
sizes 58, 60,  
62, 65, 67  
black PVD



**R2729**  
sizes 58, 60,  
62, 65, 67  
black PVD



**R2793**  
sizes 58, 60,  
62, 65, 67  
textured black PVD





# sterling silver rings

925 SILVER



**R3045<sup>®</sup>**  
sizes 60, 62,  
64, 67, 70



**R2515<sup>®</sup>**  
sizes 60, 62,  
64, 67, 70

925 SILVER



**R2141C<sup>®</sup>**  
sizes 60, 62,  
64, 67



**R2413<sup>®</sup>**  
sizes 60, 62,  
64, 67, 70  
features two  
diamonds

CUBIC ZIRCONIA

DIAMOND AND OXIDISED

925 SILVER



**R3129<sup>®</sup>**  
sizes 60, 62,  
64, 67, 70



**R2876<sup>®</sup>**  
sizes 60, 62,  
64, 67, 70

925 SILVER



**R2870<sup>®</sup>**  
sizes 60, 62,  
64, 67, 70  
cubic zirconia  
and oxidised



**R955B<sup>®</sup>**  
sizes 58, 60,  
62, 64, 67, 70  
resin



**R3046<sup>®</sup>**  
sizes 60, 62,  
64, 67, 70



**R2519<sup>®</sup>**  
sizes 60, 62,  
64, 67, 70



**R2943<sup>®</sup>**  
sizes 60, 62,  
64, 67, 70  
enamel



**R2875<sup>®</sup>**  
sizes 60, 62,  
64, 67, 70  
enamel

OXIDISED

925 SILVER



**R3128<sup>®</sup>**  
sizes 60, 62,  
64, 67, 70  
wood



**R3044<sup>®</sup>**  
sizes 60, 62,  
64, 67, 70  
oxidised

925 SILVER



**R3176<sup>®</sup>**  
sizes 60, 62,  
64, 67, 70



**R2621<sup>®</sup>**  
sizes 60, 62,  
64, 67, 70  
scratched  
and polished



fredbennett<sup>®</sup> 

